

# PRODUCT DATA SHEET

2024-03-13



Article number:

8010670332GGJ

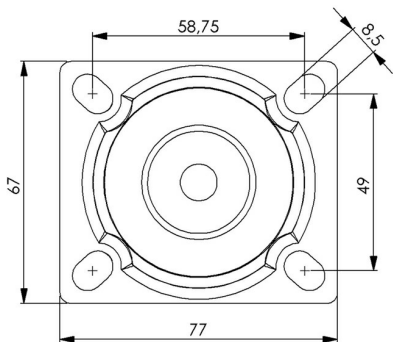
Swivel castor 100 mm, TPE-tyre

Swivel bracket. Injection moulded plastic bracket in grey PA6-GF35 with ball bearings in the swivel head. Top plate fitting. Wheel axle with nut. Wheel with grey TPE-tyre. Hub made of grey PP with threadguards. Ball bearing.



Image may differ from the actual product.\*

## DIMENSIONS



## SPECIFICATIONS

|                          |                   |
|--------------------------|-------------------|
| Diameter                 | 100 mm            |
| Totalt height            | 147 mm            |
| Load Capacity (dynamic)  | 100 kg            |
| Castor model             | Swivel            |
| Fitting                  | Top plate         |
| Material Tread           | TPE               |
| Bearing                  | Ball bearing      |
| Plate Size               | 77x67 mm          |
| CC Distance              | 59x49 mm          |
| Thread hardness (Shore°) | 85° Shore A       |
| Width of tread           | 32 mm             |
| Material Hub             | Polypropylen (pp) |
| Top Hole                 | 12x8,5 mm         |
| Color Tread              | Gray RAL 7012     |
| Teststandard             | EN 12530          |
| Offset                   | 45 mm             |
| Ball bearing             | 6202-ZZ           |
| Materialthickplate       | 2.5 mm            |
| Swivel radius            | 95 mm             |
| Product Weight           | 0.5 kg            |
| Temperature Range        | -20°C to +50°C    |

Numeric values in the technical specification can be nominal/rounded to the nearest standard dimension. To see exact values, please use the drawing.