

PRODUCT DATA SHEET

2024-04-11



Article number:

5C12685432BV-HD

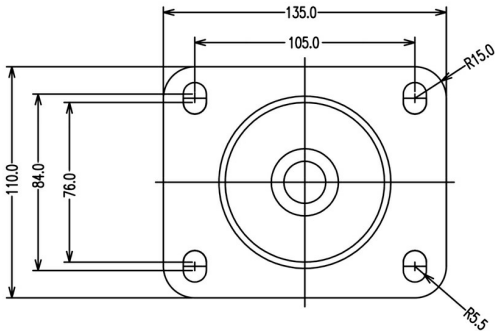
Braked castor 125 mm, total stop brake, TPU-tyre

Swivel bracket with total stop brake. Made of zinc-chromatized pressed sheet metal with double ball race swivel. Top plate fitting. Wheel axle with nut. Wheel with red TPU-tyre. Hub made of Nylon/PA6. Double Ball bearing.



Image may differ from the actual product.*

DIMENSIONS



SPECIFICATIONS

Diameter	125 mm
Totalt height	165,5 mm
Load Capacity (dynamic)	400 kg
Castor model	Brake
Fitting	Top plate
Material Tread	Polyurethane
Bearing	Double Ball bearing
Plate Size	140x110 mm
CC Distance	105x80 mm
Thread hardness (Shore°)	98° Shore A
Brake	Total brake, front
Width of tread	45 mm
Material Hub	Nylon PA6
Top Hole	11 mm
Dyn. Load Capacity (4km/)	400 kg
Color Tread	Red
Material Type	RoHS (EU) - Approved
Offset	45,5 mm
Material Thickness Bracket	3,5 mm
Materialthickplate	4 mm
Product Weight	2,41 kg
Temperature Range	-20°C to +70°C

Numeric values in the technical specification can be nominal/rounded to the cheares standard dimension. To see exact values, please use the drawing.