



Article number:

5F20680932SZ-ALU

Fixed castor 200 mm, elastic rubber-tyre

Fixed bracket made of zinc-chromatized pressed sheet metal. Top plate fitting. Wheel axle with nut. Wheel with black elastic rubber-tyre. Hub made of aluminium. Double Ball bearing.

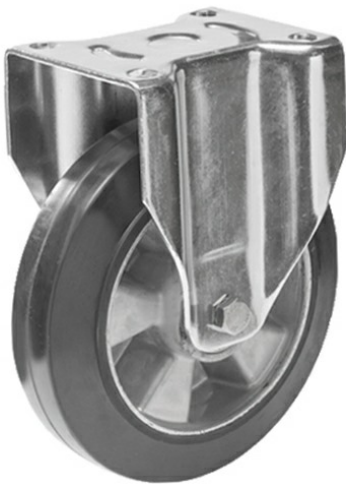
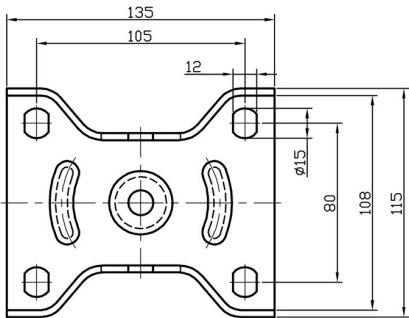


Image may differ from the actual product.*

DIMENSIONS



SPECIFICATIONS

Diameter	200 mm
Totalt height	239 mm
Load Capacity (dynamic)	450 kg
Castor model	Fix
Fitting	Top plate
Material Tread	Elastic Rubber
Bearing	Double Ball bearing
Plate Size	140x110 mm
CC Distance	105x80 mm
Thread hardness (Shore°)	75° Shore A
Width of tread	50 mm
Material Hub	Aluminium
Top Hole	13 mm
Fixed	Yes
Dyn. Load Capacity (4km/)	450 kg
Color Tread	Black
Material Type	RoHS (EU) - Approved
Material Thickness Bracket	3.5 mm
Materialthicknessplate	3.5 mm
Product Weight	3.12 kg
Temperature Range	-20°C to +50°C

Numeric values in the technical specification can be nominal/rounded to the nearest standard dimension. To see exact values, please use the drawing.