

# PRODUCT DATA SHEET

2024-04-10



Article number:

5B20680932GGX

Fixed castor 200 mm, elastic rubber-tyre, stainless

Fixed bracket made of pressed stainless steel. Top plate fitting. Wheel axle with nut. Wheel with grey elastic rubber-tyre. Hub made of grey Nylon/PA6 with threadguards. Double Ball bearing.

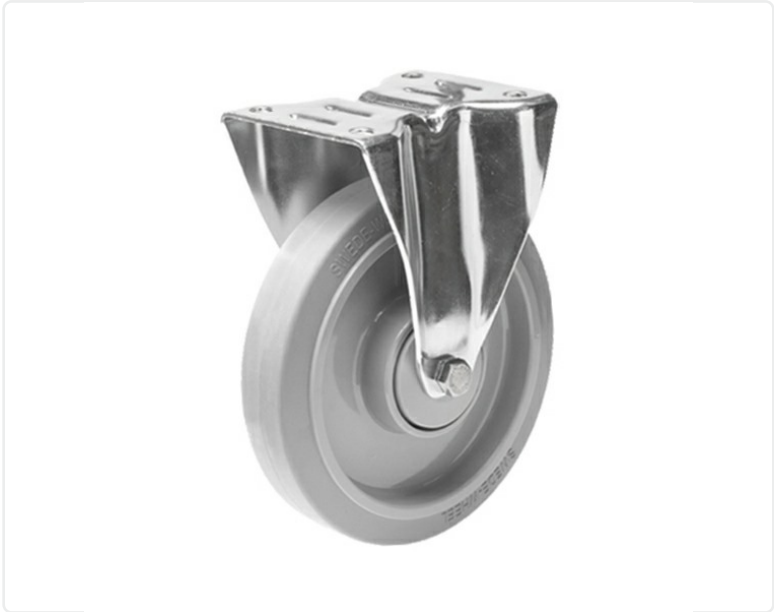


Image may differ from the actual product.\*

## SPECIFICATIONS

Diameter	200 mm
Totalt height	240 mm
Load Capacity (dynamic)	350 kg
Castor model	Fix
Fitting	Top plate
Material Tread	Elastic Rubber
Bearing	Double Ball bearing
Plate Size	140x110 mm
CC Distance	105x80 mm
Thread hardness (Shore°)	75° Shore A
Width of tread	45 mm
Material Hub	Nylon PA6
Top Hole	11 mm
Stainless	Yes
Fixed	Yes
Dyn. Load Capacity (4km/)	350 kg
Color Tread	Grey
Material Type	RoHS (EU) - Approved
Material Thickness Bracket	2.5 mm
Materialthickplate	2.5 mm
Product Weight	2.04 kg
Temperature Range	-20°C to +60°C

Numeric values in the technical specification can be nominal/rounded to the cheares standard dimension. To see exact values, please use the drawing.