

PRODUCT DATA SHEET

2024-04-09



Article number:

5B12680922GS

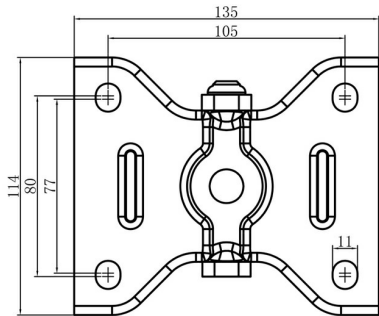
Fixed castor 125 mm, elastic rubber-tyre

Fixed bracket made of zinc-chromatized pressed sheet metal. Top plate fitting. Wheel axle with nut. Wheel with grey elastic rubber-tyre. Hub made of black Nylon/PA6. Roller bearing.



Image may differ from the actual product.*

DIMENSIONS



SPECIFICATIONS

Diameter	125 mm
Totalt height	163 mm
Load Capacity (dynamic)	250 kg
Castor model	Fix
Fitting	Top plate
Material Tread	Elastic Rubber
Bearing	Roller bearing
Plate Size	140x110 mm
CC Distance	105x80 mm
Thread hardness (Shore°)	65° Shore A
Width of tread	50 mm
Material Hub	Nylon PA6
Top Hole	11 mm
Fixed	Yes
Dyn. Load Capacity (4km/)	250 kg
Color Tread	Grey
Material Type	RoHS (EU) - Approved
Material Thickness Bracket	3 mm
Materialthicknessplate	3 mm
Product Weight	1.59 kg
Temperature Range	-20°C to +60°C

Numeric values in the technical specification can be nominal/rounded to the nearest standard dimension. To see exact values, please use the drawing.