



Article number:

5A20685912GSX

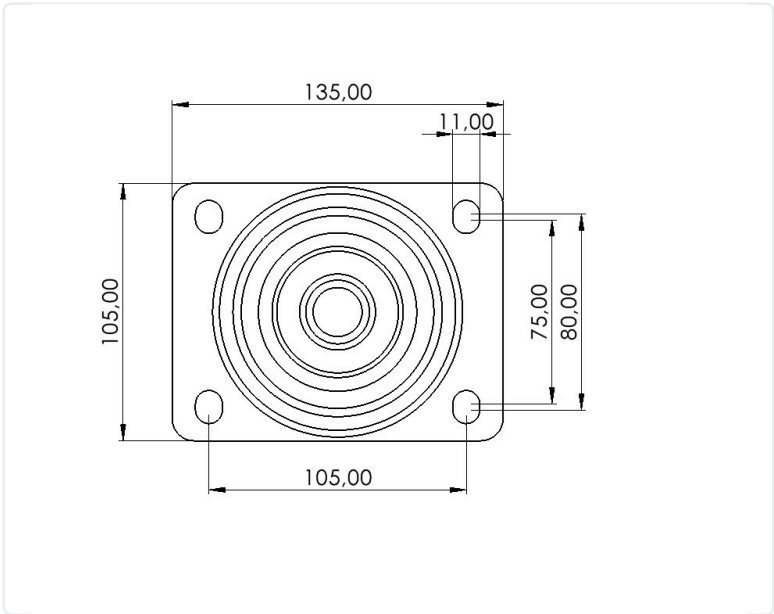
Braked castor 200 mm, total stop brake, elastic rubber-tyre, stainless

Swivel bracket with total stop brake. Pressed stainless steel with double ball race swivel. Top plate fitting. Wheel axle with nut. Wheel with grey elastic rubber-tyre. Hub made of black Nylon/PA6. Plain bearing.



Image may differ from the actual product.*

DIMENSIONS



SPECIFICATIONS

Diameter	200 mm
Totalt height	240 mm
Load Capacity (dynamic)	400 kg
Castor model	Brake
Fitting	Top plate
Material Tread	Elastic Rubber
Bearing	Plain bearing
Plate Size	140x110 mm
CC Distance	105x80 mm
Thread hardness (Shore°)	70° Shore A
Brake	Total brake
Width of tread	48 mm
Material Hub	Nylon PA6
Top Hole	11 mm
Stainless	Yes
Dyn. Load Capacity (4km/)	400 kg
Color Tread	Grey
Material Type	RoHS (EU) - Approved
Offset	52 mm
Material Thickness Bracket	2.5 mm
Materialthicknessplate	2.5 mm
Swivel radius	162 mm
Product Weight	2.27 kg
Temperature Range	-20°C to +60°C

Numeric values in the technical specification can be nominal/rounded to the nearest standard dimension. To see exact values, please use the drawing.