

PRODUCT DATA SHEET

2024-04-05



Article number:

5610660323GS

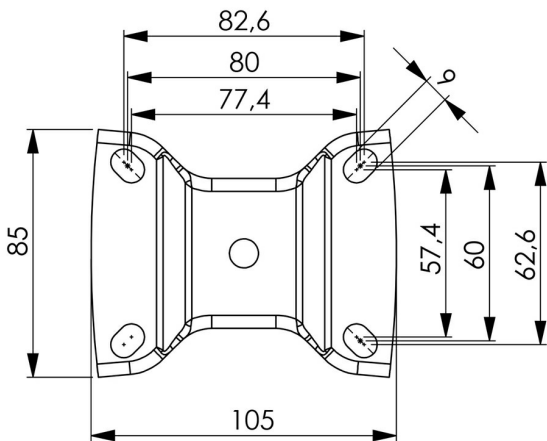
Fixed castor 100 mm, rubber-tyre

Fixed bracket made of zinc-chromatized pressed sheet metal. Top plate fitting. Wheel axle with nut. Wheel with grey rubber-tyre. Hub made of black PP. Roller bearing.



Image may differ from the actual product.*

DIMENSIONS



SPECIFICATIONS

Diameter	100 mm
Totalt height	132 mm
Load Capacity (dynamic)	70 kg
Castor model	Fix
Fitting	Top plate
Material Tread	Rubber
Bearing	Roller bearing
Plate Size	105x85 mm
CC Distance	80x60 mm
Thread hardness (Shore°)	85° Shore A
Width of tread	27 mm
Hub Hole Diameter	10 mm
Material Hub	Polypropylen (pp)
Fork Width	48 mm
Fixed	Yes
Color Tread	Grey
Material Type	RoHS (EU) - Approved
Material Thickness Bracket	2 mm
Materialthicknessplate	2 mm
Product Weight	0.69 kg
Temperature Range	-20°C to +70°C

Numeric values in the technical specification can be nominal/rounded to the nearest standard dimension. To see exact values, please use the drawing.