

PRODUCT DATA SHEET

2024-04-11



Article number:

5F16680432PZB-ALU 

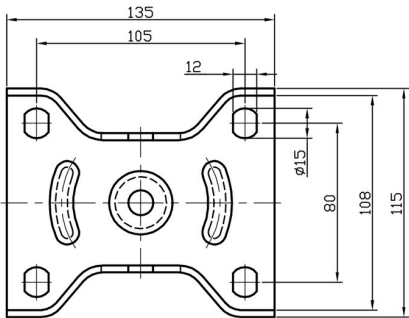
Fixed castor 160 mm, elastic convex PU-tyre

Fixed bracket made of zinc-chromatized pressed sheet metal. Top plate fitting. Wheel axle with nut. Wheel with green elastic convex PU-tyre. Hub made of aluminium. Ball bearing.



Image may differ from the actual product.*

DIMENSIONS



SPECIFICATIONS

| | |
|----------------------------|----------------------|
| Diameter | 160 mm |
| Totalt height | 199 mm |
| Load Capacity (dynamic) | 550 kg |
| Castor model | Fix |
| Fitting | Top plate |
| Material Tread | Elastic Polyurethan |
| Bearing | Double Ball bearing |
| Plate Size | 140x110 mm |
| CC Distance | 105x80 mm |
| Thread hardness (Shore°) | 83° Shore A |
| Width of tread | 50 mm |
| Material Hub | Aluminium |
| Top Hole | 13 mm |
| Fixed | Yes |
| Dyn. Load Capacity (4km/) | 550 kg |
| Color Tread | Green |
| Material Type | RoHS (EU) - Approved |
| Material Thickness Bracket | 3.5 mm |
| Materialthicknessplate | 3.5 mm |
| Product Weight | 2.33 kg |
| Temperature Range | -20°C to +70°C |

Numeric values in the technical specification can be nominal/rounded to the nearest standard dimension. To see exact values, please use the drawing.