

PRODUCT DATA SHEET

2024-04-10



Article number:

5B12680432PZB-ALU

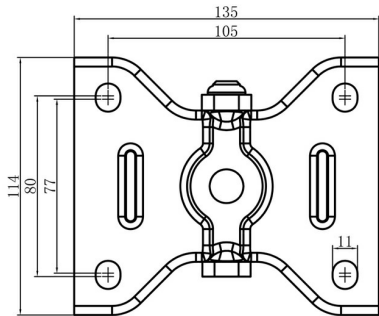
Fixed castor 125 mm, elastic convex PU-tyre

Fixed bracket made of zinc-chromatized pressed sheet metal. Top plate fitting. Wheel axle with nut. Wheel with green elastic convex PU-tyre. Hub made of aluminium. Ball bearing.



Image may differ from the actual product.*

DIMENSIONS



SPECIFICATIONS

Diameter	125 mm
Totalt height	163 mm
Load Capacity (dynamic)	400 kg
Castor model	Fix
Fitting	Top plate
Material Tread	Elastic Polyurethan
Bearing	Double Ball bearing
Plate Size	140x110 mm
CC Distance	105x80 mm
Thread hardness (Shore°)	83° Shore A
Width of tread	50 mm
Material Hub	Aluminium
Top Hole	11 mm
Fixed	Yes
Dyn. Load Capacity (4km/)	400 kg
Color Tread	Green
Material Type	RoHS (EU) - Approved
Material Thickness Bracket	3 mm
Materialthicknessplate	3 mm
Product Weight	1.73 kg
Temperature Range	-20°C to +70°C

Numeric values in the technical specification can be nominal/rounded to the nearest standard dimension. To see exact values, please use the drawing.