

PRODUCT DATA SHEET

2024-04-09



Article number:

5610660713S

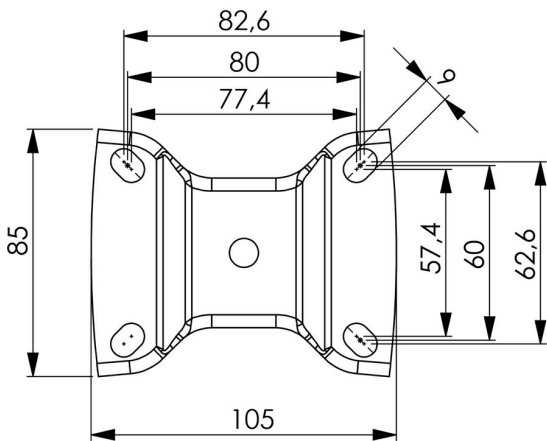
Fixed castor 100 mm, PP-wheel

Fixed bracket made of zinc-chromatized pressed sheet metal. Top plate fitting. Wheel axle with nut. Wheel made of black PP. Plain bearing.



Image may differ from the actual product.*

DIMENSIONS



SPECIFICATIONS

Diameter	100 mm
Totalt height	132 mm
Load Capacity (dynamic)	150 kg
Castor model	Fix
Fitting	Top plate
Material Tread	Polypropylene (PP)
Bearing	Plain bearing
Plate Size	105x85 mm
CC Distance	80x60 mm
Thread hardness (Shore°)	65° Shore D
Width of tread	36 mm
Hub Hole Diameter	10 mm
Material Hub	Polypropylen (pp)
Top Hole	12,5x9 mm
Fork Width	48 mm
Fixed	Yes
Color Tread	Black
Material Type	RoHS (EU) - Approved
Material Thickness Bracket	2 mm
Materialthickplate	2 mm
Product Weight	0.53 kg
Temperature Range	-20°C to +50°C

Numeric values in the technical specification can be nominal/rounded to the nearest standard dimension. To see exact values, please use the drawing.