

PRODUCT DATA SHEET

2025-07-15



Article number:

5E15685932SZ-ALU

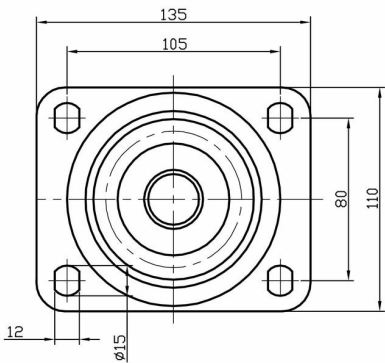
Braked castor 150 mm, total stop brake, elastic ru

Swivel bracket with total stop brake. Made of zinc-chromatized pressed sheet metal with double ball race swivel. Top plate fitting. Wheel axle with nut. Wheel with black elastic rubber-tyre. Hub made of aluminum. Double Ball bearing.



Image may differ from the actual product.*

DIMENSIONS



SPECIFICATIONS

Diameter	150 mm
Totalt height	194 mm
Load Capacity (dynamic)	300 kg
Castor model	Brake
Fitting	Top plate
Material Tread	Elastic Rubber
Bearing	Double Ball bearing
Plate Size	140x110 mm
CC Distance	105x80 mm
Thread hardness (Shore°)	75° Shore A
Brake	Total brake
Width of tread	50 mm
Material Hub	Aluminium
Top Hole	13 mm
Dyn. Load Capacity (4km/)	300 kg
Color Tread	Black
Material Type	RoHS (EU) - Approved
Offset	55 mm
Material Thickness Bracket	4 mm
Materialthickplate	6 mm
Product Weight	3,67 kg
Temperature Range	-20°C to +50°C

Numeric values in the technical specification may be nominal/rounded to the nearest standard dimension. To see exact values, please refer to the drawing.